

# NICK KIRSHNER

Property & Livestock

---

## 20TH MARCH 2021 | "OLD HUT CREEK" CARINYA LANE JINDABYNE

Well, the wet weather did nothing to dampen the spirits of the crowd at the Old Hutt Creek clearing sale. The auction was conducted under grey clouds with intermittent misting rain but the crowd stayed strong as there were many quality items on offer and the auctioneer Nick Kirshner did another mazing job auctioning off more then 300 lots with some notable items achieving some outstanding results: Case tractor \$36,500, Pool table \$2000, 3 phase macpro wool press \$11,600, Polaris sportsman quad bike, \$7,500 to name a few

<b>VENUE</b>	OLD HUT CREEK, Carinya Lane Jindabyne NSW 2628
<b>ACCOUNT</b>	P and S Thompson
<b>INSPECT</b>	8am on the the day or as otherwise pre-arranged
<b>REGISTER</b>	8am on the day or via pre-registration To pre-register for this auction, please contact our office, supply a scanned copy of your driver's license.
<b>AUCTION</b>	Commencing at 10am   Saturday
<b>CATERING</b>	Provided
<b>TERMS</b>	Bidding card system   ID required
<b>PAYMENT &amp; PICKUP</b>	On the day
<b>PAYMENT METHODS</b>	Cash & Bank Cheque or Personal Cheque (Must be pre-approved). EFTPOS facilities maybe available on the day. To register for pre-approval to pay with a Personal Cheque, please <a href="#">click here</a> .
<b>BUYERS</b>	Please refer to <a href="#">terms and conditions</a>

**Disclaimer:** We make no representation and give no warranty as to the accuracy of the preceding information and do not accept any responsibility for any errors or inaccuracies in, or omissions from, the information contained herein (whether negligent or otherwise) and we shall not be liable for any loss or damage howsoever arising as a result of any person acting or refraining from acting in reliance on any information contained herein. The above information has been furnished to us by a third party. We have not verified whether or not that information is accurate and do not have any belief one way or the other in its accuracy. We do not accept any responsibility to any person for its accuracy and do no more than pass it on. All interested parties should make and rely upon their own inquiries in order to determine whether or not this information is in fact accurate. No reader shall rely solely on the information contained in this document as it does not purport to be comprehensive or to render specific advice. This disclaimer does not purport to exclude any warranties implied by law which may not be lawfully excluded.

Please also note that all photographs relating to this sale are INDICATIVE ONLY and do not show how lots will be sold on the day.

---

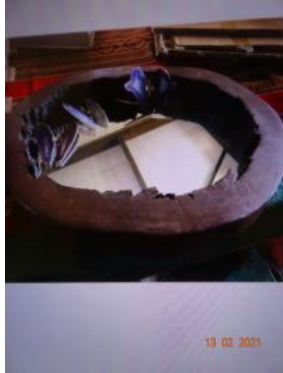
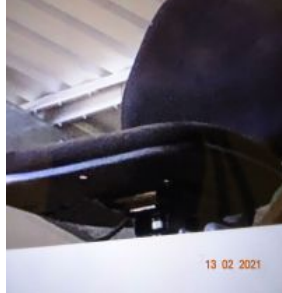
# Inventory

INVENTORY COMMING SOON

VEHICLE	Car trailer – unregistered, 2.5tonne; 6x4 box trailer – unregistered;
EQUINE	2 Horse Buggy steel work with hubs and rims; 1 horse sulky metalwork;
BUILDING MATERIALS, WORKSHOP EQUIPMENT & TOOLS	Roofing iron sheets (approx. 20-30); Bricks – common; Pallet of concrete blocks; 5 x Acrow props; Assorted blue line pipes; Assorted steel sections; Assorted timber sections and lengths; 2 x metal trestles (7ft long); Assorted boxes of nails and screws; Box of electric fittings; Boxes of plumbing fittings; Assorted tools and spud bars; Assorted fittings for brickworks – flashing and ties; Chain block and tackle; Electric planer; Assorted timber planes; Small angle grinder; Drop saw; Jigsaw; Air compressor; Assorted tools; Assorted clamps; Concrete bolts;
FARMING EQUIPMENT & MATERIALS	Metal trough; Plastic trough; Star pickets; Fencing wire; Barb wire; Case MAXFARM 60 HP Tractor; Air con cab with 1 front bucket; 3PL rear blade; Post hole digger + 300 Auger; Front fork; 6ft slasher; Polaris 450 Quad bike; Polaris 200 Quad bike; Honda XL 89 – Unregistered, 250; Honda XL 2000 – Unregistered, 250; Yamaha TY250B – Unregistered; 3 x Electric pump motors; House pressure pump – New Rains Pro RM 4000; Sprayers for Quadbike;
GARDEN EQUIPMENT & TOOLS	Ride on Lawn Mower; Assorted garden pots; Assorted rakes;
HOUSEHOLD ITEMS	Claw bath; Fibreglass bath; 2 x Fridges; Bar fridge; Light fittings; 6 seater dining table – timber; 4 seater dining table – timber with vintage style chairs; Timber butchers block with 2 stools – Hardwood; Timber drawers with mirror; 2 x cupboards; 2 x single beds; Bunk beds – steel; 2 seater black leather lounge; 3 seater black leather lounge; 3 seater red fabric day and night lounge; 2 x tall stools; Timber stool; Timber cupboard; Timber 3 drawers; Timber dressing table; Timber and glass cupboard – 2 door, 2 drawer; Framed artwork – Italian and French; Artworks; Mirrors; Timber 3 section 3.6m long cupboards; 2 x white cupboards; Aluminium door – 2.1 x 2.1m, white; 1 x timber blue door – vintage; 2 doors; Timber panels; Leadlights;
MISCELLANEOUS	Pool table with slate top cues and balls; Camping gear – tents and poles; Record players x 2; Records;
OUTSIDE ENTRIES	
1. SALVATION ARMY - COOMA	MACBro Powermatic Wool Press – rated to 250kg, 3 phase electric/hydraulic, with metal lift wheel, has only been used to press clothing; Forkforce Walkie Pallet Stacker (Model EWS10-30) – electric (battery) operation with 240v charger, fork length 1070mm, height 3m @ 220kg load and 2.4m @ 700kg load, poly tyres, unladen weight 650kgs, rear steer/fork control; SAACKE AMBIRAD Overhead Radiant Tube Heater – LPG Gas, 4.8m length linked twin tube gas heater, model AR22; Fasco Gas Blow Heater – Model 70625546, folded tube fan driven gas heater, approx. 1m cube in size; 6ft x 4.5ft Box trailer – Unregistered, round trailer connection

---

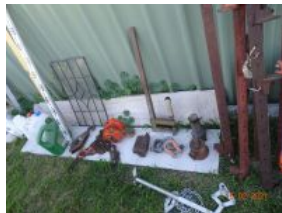
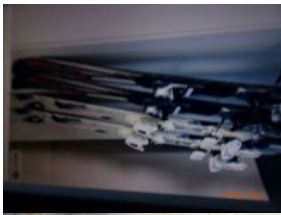
PLEASE NOTE: ALL PHOTOGRAPHS RELATING TO THIS SALE ARE INDICATIVE ONLY AND DO NOT SHOW HOW LOTS WILL BE SOLD ON THE DAY.

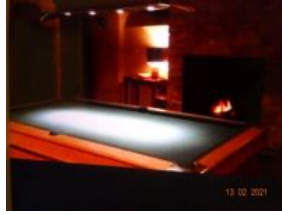




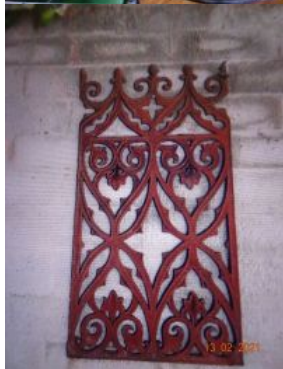
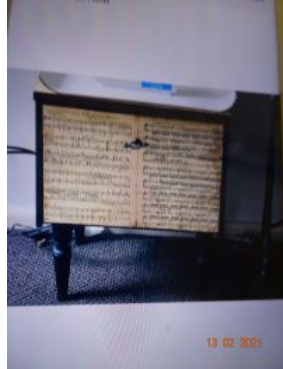




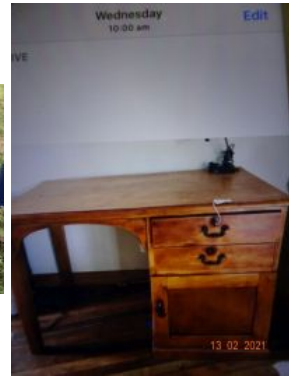
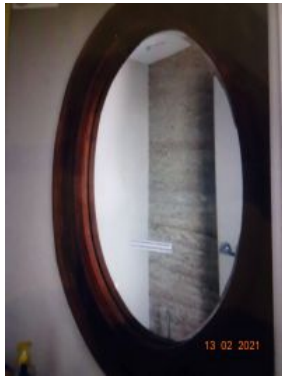




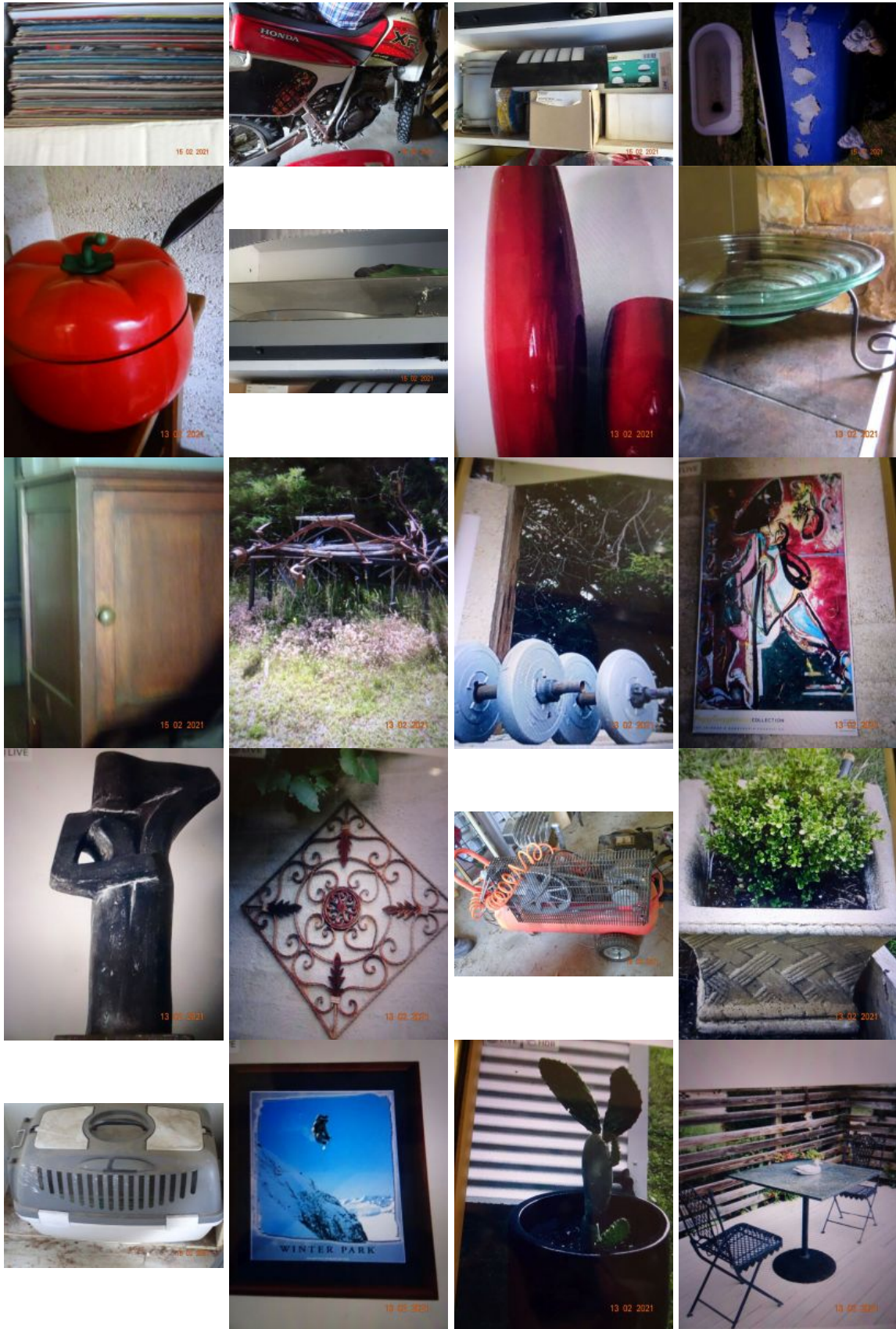
















OUTSIDE ENTRY 1

OUTSIDE ENTRY 1

OUTSIDE ENTRY 1

OUTSIDE ENTRY 1



OUTSIDE ENTRY 1

OUTSIDE ENTRY 1

OUTSIDE ENTRY 1

OUTSIDE ENTRY 1





OUTSIDE ENTRY 1



OUTSIDE ENTRY 1



OUTSIDE ENTRY 1



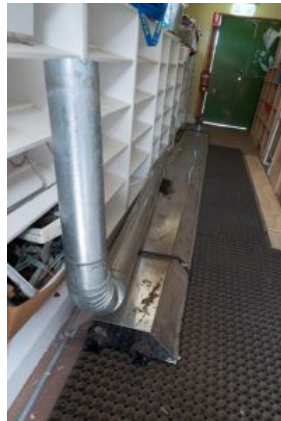
OUTSIDE ENTRY 1



OUTSIDE ENTRY 1



OUTSIDE ENTRY 1



OUTSIDE ENTRY 1



OUTSIDE ENTRY 1



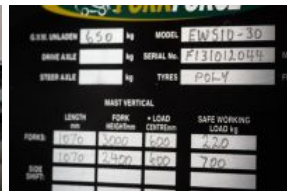
OUTSIDE ENTRY 1



OUTSIDE ENTRY 1



OUTSIDE ENTRY 1



OUTSIDE ENTRY 1



OUTSIDE ENTRY 1



OUTSIDE ENTRY 1



OUTSIDE ENTRY 1



OUTSIDE ENTRY 1



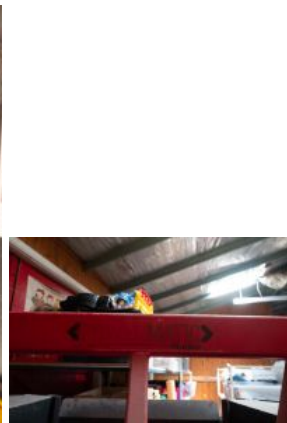
OUTSIDE ENTRY 1



OUTSIDE ENTRY 1



OUTSIDE ENTRY 1



OUTSIDE ENTRY 1



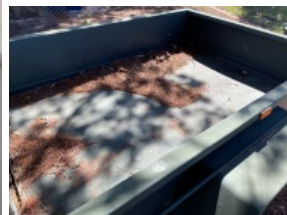
OUTSIDE ENTRY 1



OUTSIDE ENTRY 1



OUTSIDE ENTRY 1



OUTSIDE ENTRY 1



OUTSIDE ENTRY 1



OUTSIDE ENTRY 1



OUTSIDE ENTRY 1



OUTSIDE ENTRY 1







