

30TH APRIL 2022 | "OLD INGEBIRAH" | NEW TIME COMMENCING 9AM

It was a damp start to the day but improved as the day went along !! The happy crowd mingled under sunny skies and enjoyed the social aspect of clearing sale day. There were 168 registered bidders and 341 lots sold but one of the main attractions was the tractor which created substantial interest as well as competitive bidding and sold for \$70,000!!! A happy and successful day for all involved.

VENUE	"Old Ingebirah" 3154 Barry Way, Jindabyne NSW 2627
ACCOUNT	Shorehunt Pty Ltd
INSPECT	8am on the the day or as otherwise pre-arranged
REGISTER	8am on the day or via pre-registration To pre-register for this auction, please contact our office, supply a scanned copy of your driver's license.
AUCTION	Commencing at 9am Saturday
CATERING	Provided
TERMS	Bidding card system ID required
PAYMENT & PICKUP	On the day
PAYMENT METHODS	Cash & Bank Cheque or Personal Cheque (Must be pre-approved). EFTPOS facilities maybe available on the day. To register for pre-approval to pay with a Personal Cheque, please click here .
BUYERS	Please refer to terms and conditions

Disclaimer: We make no representation and give no warranty as to the accuracy of the preceding information and do not accept any responsibility for any errors or inaccuracies in, or omissions from, the information contained herein (whether negligent or otherwise) and we shall not be liable for any loss or damage howsoever arising as a result of any person acting or refraining from acting in reliance on any information contained herein. The above information has been furnished to us by a third party. We have not verified whether or not that information is accurate and do not have any belief one way or the other in its accuracy. We do not accept any responsibility to any person for its accuracy and do no more than pass it on. All interested parties should make and rely upon their own inquiries in order to determine whether or not this information is in fact accurate. No reader shall rely solely on the information contained in this document as it does not purport to be comprehensive or to render specific advice. This disclaimer does not purport to exclude any warranties implied by law which may not be lawfully excluded.

Please also note that all photographs relating to this sale are INDICATIVE ONLY and do not show how lots will be sold on the day.

Inventory

INVENTORY BEING UPDATED REGULARLY

VEHICLES	Land Rover 1992 TDI Defender Ute (Steel Tray, Unregistered, Approx. 263,593kms, 2WD); 2008 Polaris 500HQ EFI 4-wl (1,600hrs); Toyota Hilux car parts; Fibreglass ute canopy; Hilux chrome wheels; Maxxi tyres;
RARE UNIQUE ANTIQUES & COLLECTABLES	Vintage Hay Rake
HORSE SADDLERY	Pack Saddle with leather bags; Assorted Horse Gear (Bridles, bits, rugs, saddle cloths, saddle bags, etc); Bates Cap Dressage Saddle 16inch;

BUILDING MATERIALS, WORKSHOP EQUIPMENT & TOOLS	200L Diesel Pod with pump and hose, Honda Generator 7 KVA (electric start); 2 x Stihl chainsaws (034 & 025); Chains equipment, 3 car carport steel shed frame and roof iron (Oregon beams) Qnty 16' roof iron (good condition); Steel St Pipes (100mm x 6m); Various Steel lengths (c-purlin, H Beam, railway iron); Large qnty poly pipe fittings & poly pipe; Mountain Ash cladding boards; Various hardwood lengths and sizes; Hardwood doors x 6; Makita bench grinder; Dri Grease guns; Angle grinders; Electric Arc Welder with masks and gloves; Steel toolboxes;
FARMING EQUIPMENT & MATERIALS	2008 McCormick CX105 Extra Shift FWA TRACTOR (approx. 1,800 hrs); Trima 2.0 p Self Levelling Front Loader with 7' Bl in 1 Bucket 7'; NELL reversible blade /stickrake 7'; NELL 4 prong hay forks; All Euro Quick Hitch with joystick control (Ft Con Cab, approx. 1700 hrs); 20 tonne Hydraulic Log Splitter; Arena Plough/ Rake; Slasher 7'; Grader Blade; Thompsor Portable Steel 30 head Cattle Yards with Vet Crush; Calf race and cradle; Loading ramp with walkway; 1,000L water p; Cattle Husbandry gear (calf puller with chains, drench guns, ear marking pliers); 2 Steel chemical storage cages; W Spinner; Post dolly; Post puller; Chook pen; 100L spray unit; 12V Sunbeam portable shearing unit with handpiece an equipment; Hay feeder; 8 x dog fence chain mesh panels (1.8m (h) x 2.1m (w) with pins); 3 sided animal shelter shed frame; Electric fence stand offs w porcelain insulators; Electric fence energiser plus other electric fence gear; Ass fencing gear (steel posts, plain wire, barbed wire); 1,000L Plastic water tank; 1,000L fibreglass water tank;
OUTDOOR GARDEN EQUIPMENT	Cub Cadet Ride on Mower (100hr); Garden cow;
HOUSEHOLD ITEMS	7' Slate Pool Table (Excellent Condition with balls, 6 cues and rack, accessories); Drizabone Full Length Coats x 6 (e condition, various sizes); Large Pine TV unit with cupboards; Pine side board x 2; Pine table; Pine desk w drawers set; laminated bookshelves; Pine TV/Magazine unit; Filing cabinet; Tables; Chairs; Bunk bed frames; Indoor spa bath w pi Fridge freezer; 2 bar fridges; Steel wood box; Gas BBQ; Plastic dog kennels;
MISCELLANEOUS	Kids toys (Lego, building blocks, Thomas the Tank engine); Books; Skiing gear (poles, boots, backpacks, snow shove bags, etc); Kids karate set; Deer antlers; Push bikes; Art easel;
OUTSIDE ENTRIES	
1. IAN EVANS	Winchester Mod 1906 Pump Action .22; Winchester Mod 36 Shotgun 9mm Rim Fire; Winchester Mod 1904 .22; Lithgow .22; Norinco Mod 4 Bolt Action Repeater .22
2. RAYMOND & WILLIAM CROWE	Agromaster PTO Grader Blade; Gas/Electric Fridge; Gas Stove/Oven
3. HELEN STURGEON & JENNELL FARRELL	Wool press; Wool table; Wool scales
4. LENNY WILLIAMS	Workshop equipment & tools

PLEASE NOTE: ALL PHOTOGRAPHS RELATING TO THIS SALE ARE INDICATIVE ONLY AND DO NOT SHOW HOW LOTS WILL BE SOLD ON THE DAY.



drill-press.



grease-gun.



hours-on-tractor.



hydraulic-log-splitter



makita-bench-grinder.



arena-pro-rake-leveler-



honda-generator.



polaris-500-hq-4wd-bike



arena-pro-rake-leveller



superior-slasher



portable-cattle-yards.



3-car-carport-complete-iron-cladding-oregon-beams



1000-l-fibreglass-tank



00-l-spray-unit-with-30-m-retractable-hose



2000-l-plastic-water-tank



pool-table.



6-x-6-m-x-100mm-steel-pipe-16-roofing-iron-assorted-steel-lenghts



200-l-diesel-pod.



1000-l-water-pod.



cub-cadet-rideon-mower-2.



chainsaws



steel-posts-wire-spinner-dolly-post-puller



dog-fence-2m-x-1-8-m-chain-mesh-x-8-sections-with-pins.



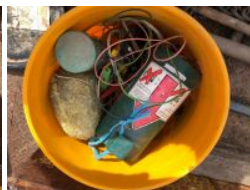
reversible-stick-rake-grader



qty-hardwood.



box-of-fenceing-gear-plastic-insulators-etc



portable-fence-energiser-etc.



3-sided-animal-shelter-steel-frame.



qty-poly-pipe.



mountain-ash-slabs-pine-table.



storage-cages.



trusses-for-3-car-carport.



hay-forks.



4-in-1-bucket.



grader-blade



1992-land-rover-defender-tdi-unregistered



steel-frame-for-3-sided-shelter



hay-feeder.



electric-fence-stand-off-insulators



tractor-sale-photo-2.



tractor-sale-photo.



hilux-roof-canopy



kanga-sign



tv-unit



filing-cabinet



deer-antlers



pine-sideboard



teel-posts-dolly-and-puller



calf-puller-&-chains



loading-ramp-frame



scrap-steel



pine-tv-unit.



vintage-hayrake



cattle-ear-mark-pliers



pool-rack-and-cues



calf-cradle



portable-calf-race



timber-doors



packsaddle-and-bags



hours-on-mower



thompson-vet-crush



native-dog-trail-sign



loading-ramp-with-walkway



fridge



polaris-hours



wire-spinner



calf-race-with-back-up-gates



pine-desk



fridge-freezer



steel-box



portable-cattleyards



landrover-km-s.



gas-bbq.



doors.



12-v-shearing-unit-and-handpiece.



fridges



dog-kennel



push-bikes





Outside Entry - Ian Evans



Outside Entry - Ian Evans



Outside Entry - Ian Evans



Outside Entry - Ian Evans



Outside Entry - Ian Evans



Outside Entry - Ian Evans



Outside Entry - R & W Crowe



Outside Entry - R & W Crowe



Outside Entry - H Sturgeon & J Farrell



Outside Entry - H Sturgeon & J Farrell



