

NICK KIRSHNER

Property & Livestock

15TH APRIL 2023 | "CHIMNEY RIDGE" MOONBAH | COMMENCING 9AM

A great sale and an early finish for most with 243 lots sold !!

Its was a lovely autumn day with mild temperatures for all the registered bidders as well as many people just coming up to enjoy a day out in a beautiful part of the world. Dave and his crew kept everyone topped up with wonderful coffees and scrumptious food.

VENUE "Chimney Ridge" 820 Big Yard Road, Moonbah NSW 2627

ACCOUNT Strategy Evaluation & Engagement for Development Pty Ltd

INSPECT 8am on the the day or as otherwise pre-arranged

REGISTER 8am on the day or via pre-registration To pre-register for this auction, please contact our office, supply a scanned copy of your driver's license.

AUCTION Commencing at 9am | Saturday 15th April 2023

CATERING Provided | Coffee2630

TERMS Bidding card system | ID required

**PAYMENT
& PICKUP** On the day

**PAYMENT
METHODS** Cash & Bank Cheque or Personal Cheque (Must be pre-approved). EFTPOS facilities maybe available on the day. To register for pre-approval to pay with a Personal Cheque, please [click here](#).

BUYERS Please refer to [terms and conditions](#)

Disclaimer: We make no representation and give no warranty as to the accuracy of the preceding information and do not accept any responsibility for any errors or inaccuracies in, or omissions from, the information contained herein (whether negligent or otherwise) and we shall not be liable for any loss or damage howsoever arising as a result of any person acting or refraining from acting in reliance on any information contained herein. The above information has been furnished to us by a third party. We have not verified whether or not that information is accurate and do not have any belief one way or the other in its accuracy. We do not accept

any responsibility to any person for its accuracy and do no more than pass it on. All interested parties should make and rely upon their own inquiries in order to determine whether or not this information is in fact accurate. No reader shall rely solely on the information contained in this document as it does not purport to be comprehensive or to render specific advice. This disclaimer does not purport to exclude any warranties implied by law which may not be lawfully excluded.

Please also note that all photographs relating to this sale are INDICATIVE ONLY and do not show how lots will be sold on the day.

Inventory

VEHICLE	Twin axle stock trailer and crate (rego until November 2023); CFMOTO X520 eps2021 4WD Motorbike (approx. 200 hrs); Ute crane on wheels; 5 HP Mercury outboard motor (2 stroke); 15 HP Mercury outboard motor (2 stroke);
HORSE SADDLERY	Part of old blacksmith forge;
BUILDING MATERIALS, WORKSHOP EQUIPMENT & TOOLS	Heavy duty work benches; Stainless steel distilling equipment; 3 phase boiler; Assorted workshop tools; Poly & PVC fittings; Poly pipe; Dripline; Stainless steel bench; Steel; Workshop shelving; Electric cement mixer; Drain covers;
FARMING EQUIPMENT & MATERIALS	Kioti Tractor 76 HP w front end loader & 4in1 bucket (approx. 1300 hrs); 1952 Ford 3000 tractor (3PL and hydraulics, good going order); Carry all; Pallet forks; Pipe ripper & layer; Slasher; Hay forks; Hay feeding trailer; Post hole digger; Fire fighting unit (Honda motor, engine & pump purchased 2018, 70m ¾ inch fire pressure hose on reel, in good order); Rata Power Claw; Top dresser 3PL; Self feeder; Front end loader mounted rake; Light cultivator bar 1.5m wide; 3 disc one way Massey Fergusson plough; 3PL back blade; Satesto cattle scales; Boomspray (200L unit, 4m boom); 45 tonne Log splitter; Alaskan saw mill; 36 inch bar & chain; Old gates; 20L Silvan tank; 200L Silvan tank; Fencing materials; Dray chains; 3PL draw bar; Home made grain feeder; Steel cable;
HAY	Oaten hay 4 x 3 x 8;

HOUSEHOLD
ITEMS

Three seater light brown 'suede' couch; Three seater red leather couch; Bedside tables; Trip Trap baby to toddler chairs (Norwegian design); 1970's style Jarrah 4-6 seater extension dining table; 6 1970's style Jarrah dining chairs; Queen bed base and bed head (timber slat base); Electric panel heater (white); Electric panel heater (Red oil column); Trampoline (5 metre diameter); Assorted pot plants (6 x green ceramic w plants, 4 x green ceramic pot plants); Large wood baskets, numerous; Juniper plants in pots; Spa pump; Glass; Royal Albert Country Roses Dinner Set (6 piece x 12 place setting, complete); IKEA toddler chair, white; 3 seater brown suede sofa bed; Folding porta cot 'Galaxy'; Potty and toilet training seat; Kids bathroom stools; 2 lamps; Clothes airing stand; 6 Westminster china bird plates; 40cm x 40cm cushions; King size bed base; AVANTI Rotary food mill "Mouli"; 2 x black metal solid fire screens; Set of Silver goblets and brass vases; Set of coasters; Set of Wine bottle 'coasters'; Set of floral vase and candles; Set of European momentos; Set of tiny ducks and geese; Set of rose cube and floral china plate; Set of two Mexicans; Set of tiny ornaments; Set of pink glass vase and silver coasters; Set of 6+1 tumblers; Set of fruit topped china jug & floral vase; Set of two beer steins; Set of petrified wood pepper & salt shakers; Set of 2 silver conical goblets; Set of 6 fine whisky glasses; Set of cut glass tumblers; Set of 5 cut glass sherry/port glasses; Set of 6 cut glass port glasses; 1 x king single bed (wooden slat base and metal frame); Pewter jug/vase; 2 x cut glass salt & pepper shakers; Ceramic pottery (woven handle tea pot); Canadian 'inuit' ceramic souvenirs; Set of 5 china vases & small jugs; Slate painting (Beaufort en valle); Wedgewood small china 'swan' dish; Set of brass candle holders; Ceramic vase; Wooden tongs; Set of royal family commemorative coins; Vintage china plate (brown and cream leaves); Set of Chinese diorama; Blue wren oval 'painting'; 2 x Red mat runner (0.9m x 3.7m); Red mat runner (0.7m x 4.5m); Floral mat (Indian wool, 2.0 m x 1.25m); Green and white mat (synthetic, 1.6m x 2.3m); Blue and white mat (synthetic, 1.2m x 1.7m); Large grey carpet mat (4.25m x 3.65m); Mushroom pink carpet rectangle (3.65m x 2.53m); Mountain cabin print artwork; Brass fire screen (sailing ship and shells); Large red carpet mat (wool, 4.5m x 3.0m); Large red carpet mat (wool, 4.5m x 3.6m); Grey carpet runner (wool, harth mat, 3.6m x 1m);

MISCELLANEOUS

Pot belly;

FIREARMS

Howa Model 1500 .308 Nikko Stirling 3-9x42; Remington 44-40 Pump Action Rifle x 2 (Model 14 and a half with Winchester 44-40 calibre barrel carbine length); .22 Hornet Savage Bolt Action Rifle w scope (Model 340 series E, C681630); Various reloading dies; Gun cabinet;

LIVESTOCK

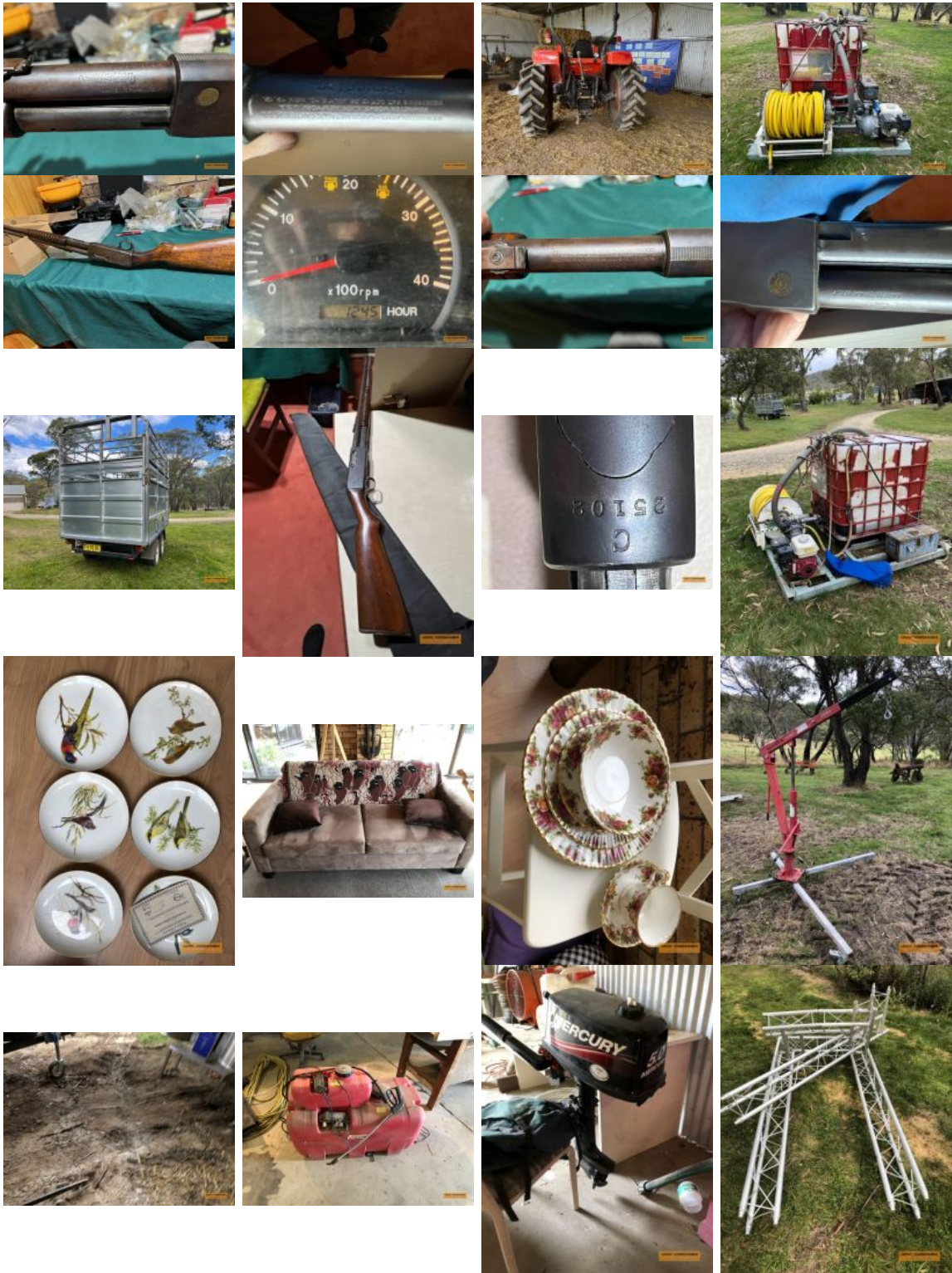
8 chickens

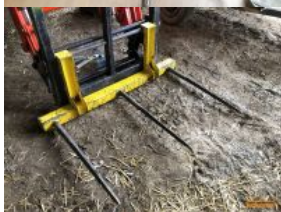
OUTSIDE
ENTRIES













Outside Entry 1 - B
Walder



Outside Entry 1 - B
Walder



Outside Entry 1 - B
Walder



Outside Entry 1 - B
Walder



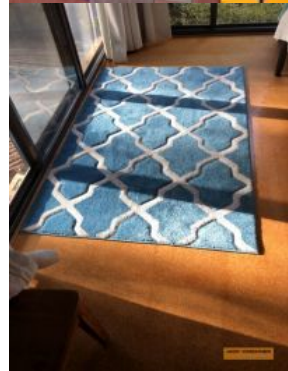
Outside Entry 1 - B
Walder

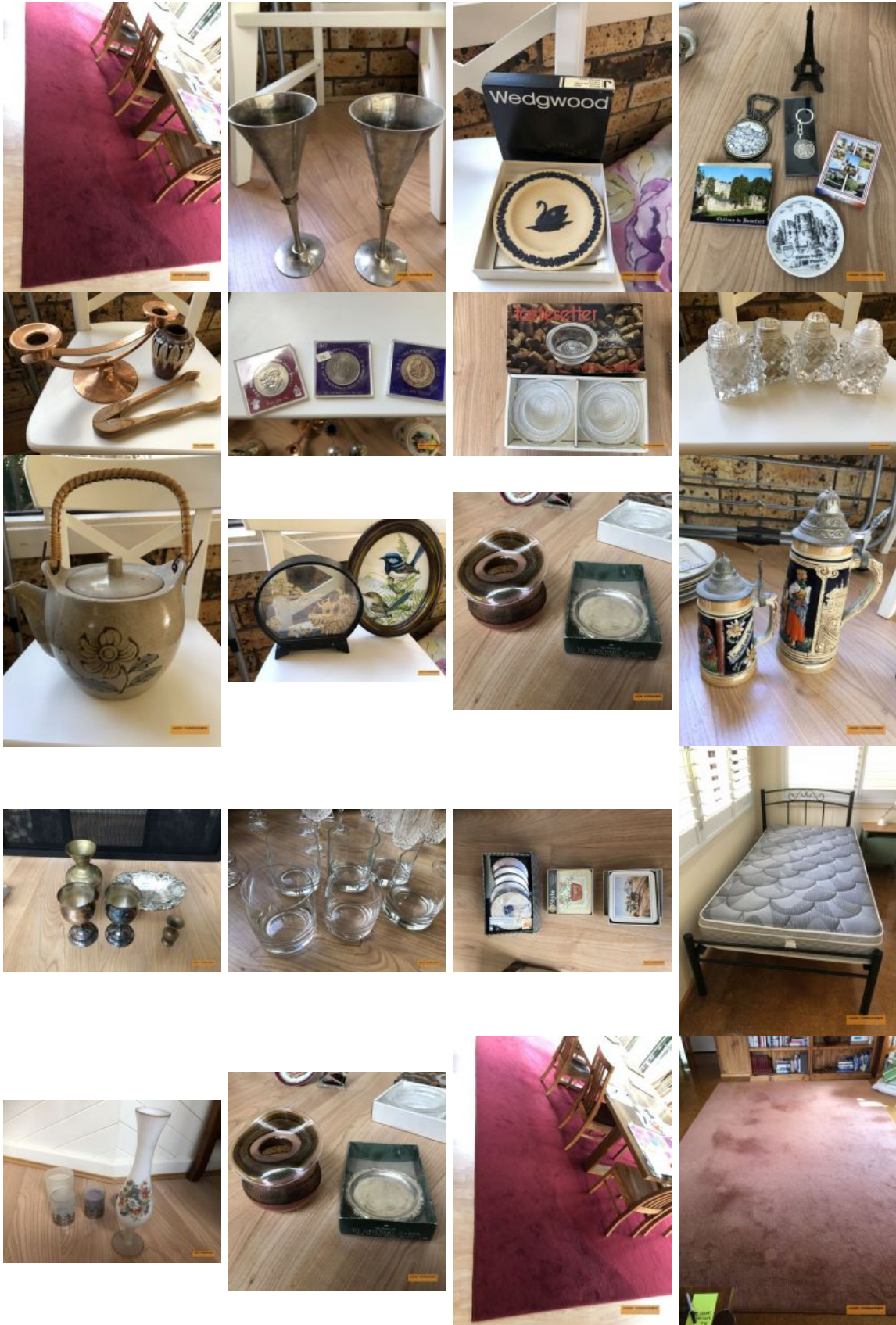


Outside Entry 1 - B
Walder

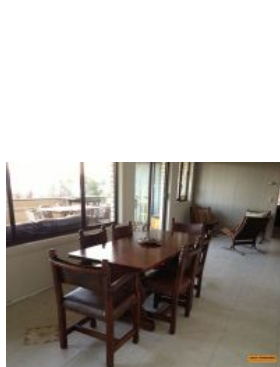
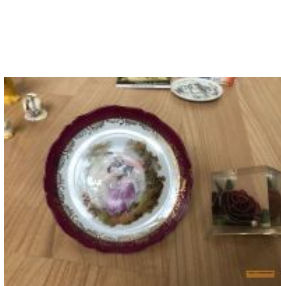


Outside Entry 1 - B
Walder









Outside entry 2-
A.Brass

Outside entry 2-
A.Brass

Outside entry 2-
A.Brass





Outside Entry 3 - R
Haynes