

NICK KIRSHNER

Property & Livestock

13TH MAY 2023 | CRACKENBACK | COMMENCING AT 9AM

An awesome autumn day to conduct the Crackenback clearing sale. There were 125 registered bidders with many more just attending the sale for the great food supplied by Tony and his team from Roses Restaurant as well as viewing the vast and varied inventory items that were on offer. Our two fabulous auctioneers Nick and Aaron did another spectacular job of auctioneering 540 lots supported by the tremendous NKPL crew that assist with bid spotting and the administration of the sale to ensure everything flows smoothly. A great way to end the clearing sale season !!!!!
Clearing sale season starts again in Spring- enjoy Winter !!!

VENUE 834 Alpine Way, Crackenback NSW 2627

ACCOUNT C Breitfuss

INSPECT 8am on the the day or as otherwise pre-arranged

REGISTER 8am on the day or via pre-registration To pre-register for this auction, please contact our office, supply a scanned copy of your driver's license.

AUCTION Commencing at 9 am | Saturday 13th May 2023

CATERING Provided | Catayrosa

TERMS Bidding card system | ID required

**PAYMENT
& PICKUP** On the day

**PAYMENT
METHODS** Cash & Bank Cheque or Personal Cheque (Must be pre-approved). EFTPOS facilities maybe available on the day. To register for pre-approval to pay with a Personal Cheque, please [click here](#).

BUYERS Please refer to [terms and conditions](#)

Disclaimer: We make no representation and give no warranty as to the accuracy of the preceding information and do not accept any responsibility for any errors or inaccuracies in, or omissions from, the information contained herein (whether negligent or otherwise) and we shall not be liable for any loss or damage howsoever arising as a result of any person acting or refraining from acting in reliance on any information contained herein. The above information
Printed 22 Dec 2024

has been furnished to us by a third party. We have not verified whether or not that information is accurate and do not have any belief one way or the other in its accuracy. We do not accept any responsibility to any person for its accuracy and do no more than pass it on. All interested parties should make and rely upon their own inquiries in order to determine whether or not this information is in fact accurate. No reader shall rely solely on the information contained in this document as it does not purport to be comprehensive or to render specific advice. This disclaimer does not purport to exclude any warranties implied by law which may not be lawfully excluded.

Please also note that all photographs relating to this sale are INDICATIVE ONLY and do not show how lots will be sold on the day.

Inventory

VEHICLE	Mercedes Benz 450 SEL; Yamaha YZ60; 225/50R16 tyres x 4; 5ft box trailer;
RARE UNIQUE ANTIQUES & COLLECTABLES	Room divider; 3 x Lanterns; Fly spray pump; Rosebank Cottage Trolley; Farmers milk can; 2 x Travel cases; 4 x Austrian vintage bottles; 6 x Chesterfield chairs; 3 x Lamps; Timber wall cabinet with mesh front; Remington typewriter; 3 x Irons; 3 x builder planes; Austrian timber clock; Antique locks in timber box; Timber plant stand; Rabbit traps; Horse shoes; Mincer; Kettles & iron pots; Medical chest; Horse drawn plough; Wine glasses; Bottles;
HORSE SADDLERY	30kg anvil; Horse halters;

BUILDING
MATERIALS,
WORKSHOP
EQUIPMENT &
TOOLS

Peerless air compressor 16CFM; Portable Triton super jaw vice; 240 Volt nibbler; Assorted power tools & general tools; 2 x Chainsaw sharpeners; Oxy/Actelyne cutting set; 4 Amp battery charger; Assorted cutting disks; Numerous fire extinguisher; Portable blower fan; 4 x Timber building horses; 200mm bench grinder; Floor mounted vice; Universal bender; Assorted PVC pipes; Jet Fire 25 Gas jet heater; Large yellow tarp; Ford industrial 170 cubic inch motor; DAB 240v water pressure pump; Various small petrol engines; Assorted floor tiles; Assorted fuel & lube filters; Measuring wheel metric; Hafco AL400 metal lathe; Hafco Mill Drill machine HM46; Record wood lathe No3/AS; Pedastal drill; Durden Tabletop saw with 6 inch planer; Avery sliding scale; Oxy trolley; Double glazed sliding window (new, 2740mm x 1575mm); Double glazed sliding window (new, 940mm x 1240mm); Stainless steel work bench (1200 x 800mm); Stainless steel work bench (1220 x 610mm); 3 phase extraction fan; Monza pressure pump (working); Super 8 splicer; Box of Mediterranean tiles; Hitachi jigsaw; Various tools; Dunlight 10KVA Kawasaki powered generator;

FARMING
EQUIPMENT &
MATERIALS

Massey Ferguson 135 diesel tractor; Massey Ferguson 50D backhoe/loader with various size buckets; Sullivan Spreader SX 500 (unused); John Berends HD 153 slasher; John Berends post hole borer with 150 mm & 300mm augers; John Berends 3PL 5ft grader blade; John Berends 3PL pipe layer/ripper; Wire spinner; Roll of high tensile fencing wire; 5kg grease gun; Hayes wire strainer; Gallagher portable fence posts; Selecta Backpack weed sprayers; 1000L water tank & pump (not working); 100L Fire fighting water tank;

OUTDOOR
GARDEN
EQUIPMENT

ProSimon golf set; Various garden to fire hoses; Yardman ride on mower; 15 x Promo outdoor umbrellas; White garden bench; 2 x Planter pots; Green garden seat; Wheel barrow;

2 x Forest green wall cabinets; Extendable timber dining table; Faux suede chaise lounge; 2.4kw electric oil heater; Wall mountable wrought iron shelving; 4 x Wrought iron wine racks; White cane chair with cushions; 2 x timber side tables; 4 x Glass tubular storage containers; Numerous wicker

HOUSEHOLD
ITEMS

baskets; Fischer & Paykel 60cm wall oven (working); Blanco range hood (working); Ceran Electric two burner cooktop (working); 2 x leather mauve lounges; Beige sofa bed; Pine dining table; 2 door wardrobe; 2 x round timber & laminex side tables; Galvanised flue cowl (gas); 2 x timber folding dining chairs; 2 x painted timber side tables; 7 x timber and Laminex two draw units; Mobile stainless shelving; Numerous steins & mugs; 2 x Eskys; Timber book case; 5 x 2 drawer writing desk; Assorted framed artwork/prints; Timber coffee table (1200 x 700mm); Timber hutch; 2 x timber tub chairs; Bar fridge; Commercial double stainless steel sink; Decorative twigs; Leather briefcases; Blue China tea pot; 2 x Gecko candle sticks; Portable Toshiba TV; Country timber tray; 2 x white vases; 2 x stoneware jugs; 2 x wooden ducks; Various terracotta items; 2 x Director chairs; 1 x Canvas chair; Crystal wine decanter; 1 x square timber table; Pedestal fan; Children's timber table and chair set; Rustic timber kitchen chair; Gas lift office chair; 6 x IKEA black framed box sets; Large glass vase; Green wire basket; BEKO stick vacuum; Urn and bowl Mediterranean set; Timber drinks trolley; Rustic hall table; Stereo system; Clock; Blue glass vase; Leather chaise lounge; 2 x Timber coffee tables; 2 x Foot stools; 32inch TV; Crackle finish blue small draws; 2 x Timber side tables painted; White wall cabinet with four draws; Steel shoe rack; Oak side cabinet; White bathroom cabinet with glass door; Brass standard lamp; Various cane baskets; Yellow fold out sofa; 4 x White box shelving; Wrought iron and timber candelabra; Box of books; Gold throw rug; Various wire drawers; IKEA timber wardrobe; Terracotta lamp; Sunbeam slow cooker; Timber box with sailing ship; Vanity case; LG 32 inch TV w mount; General kitchen items; Queen bed & base; Chest of draws; Cube shelves; 2 x Rollaway beds; 1 x Planter urn; Carpet shampoo machine; 2 x Blue children's painted shelving; 5 x Wrought iron wine decanters; Simpson clothes dryer; 2 x Top loader washing machines; Ceramic lamp base; Brass and glass pendant lamp; Candelabra; Rustic blanket box; Household tools; White louvre doors; Garage shelving; Commercial two door under bench fridge;

MISCELLANEOUS

Children's wooden building blocks; Spear fishing gun; Taxidermy wedgetail eagle; Various sized green shade clothes; Crane mountain bike; 2 pairs gumboots; 10 x plastic drum storage containers; Straw display brooms; Lyte step ladder; 2 x single door steel lockers; Timber shop counter; Ice bucket & stand; Grand power exercise bike; 1 x Hedgren computer bag; 3in1 Pixma printer; Various new soft toys; Luggage tags; Ski racer printed; Original artwork 'Seagulls' by Janice Latham; Original artwork '2 Boats' by Janice Latham; 3 x framed shell collages; 1 x Male wooden puppet; Cricket bat; Various straw hats; Head Skis; Building print (wooden frame); 2 x Rain umbrellas; Board game; Green leather women's cowboy boots; 2 x Evening shoes; Suede brown ankle boots; Sindlers cart; Brown woollen blanket; Bobble throw; Various cushions; 2 x Children's backpacks; Timber pigs; Designer clothing and ski suits; Ardel safe; Framed Michael Taylor Painting; Original artwork 'Country Scene' by Janice Latham; Ian Stephens Bathurst original art; Bucket of dumbbells; Treadmill; Suede ¾ boots (Size 39); 3 x Leather briefcases; 2 x Newspaper holders; 4 x Wine skins; Rope dog; Century Electronic Personal Safe; Ardel Electronic safe; Ornamental sword; Slide converter; Super 8 editor; Wicker hearts; Various ski boots; Bird houses; Coffee sign; Ladies watches & purses; Bumbags; New balls of wool; Travel iron; Box of linen & throws; Fabric & towels;

OUTSIDE
ENTRIES

1. D BREITFUSS

1981 Toyota FJ45 Ute (4.2L petrol); Wall mounted wind out awning (approx. 5m wide);

2. G & P NICHOLS

Camping Trailer (2014 model, rego until Sept 2023, immaculate condition, attachable annex and awning, excellent canvas and generous size soft floor, minimal use and always stored under cover. Easy access to the queen sized bed with as-new inner spring mattress, has gas struts for easy lifting to under bed storage. Lighting for front storage, slide out stairs and walkway. Slideout kitchen includes sink, storage and 2 burner gas cooktop. 80 litre water tank, hand pump to kitchen, electric brakes, 600 w power inverter, wooden table, has 2 jerry can holders and 1 gas bottle holder in the stone guard and front mounted toolbox. A great camper trailer that has plenty of lockable storage, 16ft, tare 1160); Stihl Chainsaw 08S + post borer; Spika Category AB Gun Cabinet (6 guns);

3. OLD SPRINGFIELD

1998 Land Cruiser Ute (4.2L, 75 Series, registered)

4. L CLUGSTON

Wine barrel (Approx. 250 L, from Slovenia and is made from Slovenian Hickory and is in excellent condition); Angle grinder; Transarc Welder; Solar panel (for 12V battery); Tradies toolbox; Socket spanners (3/4, 1/2, 3/8, 1/4 inch drive); Rabbit traps (9 different makes); 240V cooktop oven; Garden tools; Fencing equipment; Assorted boxes of spanners; Chains and chain dogs; Come along; Furniture trolley; Trolley jack; 5 HP Suzuki water pump

5. JENDA

Document safe; Ride on mower; Honda push mower; Plastic garden tipping trailer; Assorted hand tools; Endless chain; Chains; Kerosene lanterns; Metal storage box; Tool boxes; Pick & axe heads; Electric lift; Ladder

PLEASE NOTE: ALL PHOTOGRAPHS RELATING TO THIS SALE ARE INDICATIVE ONLY AND DO NOT SHOW HOW LOTS WILL BE SOLD ON THE DAY.









Outside Entry 2 - G & P
Nichols

Outside Entry 2 - G & P
Nichols

Outside Entry 2 - G & P
Nichols



Outside Entry 2 - G & P
Nichols

Outside Entry 2 - G & P
Nichols

Outside Entry 2 - G & P
Nichols

Outside Entry 2 - G & P
Nichols



Outside Entry 2 - G & P
Nichols

Outside Entry 2 - G & P
Nichols

Outside Entry 2 - G & P
Nichols

Outside Entry 2 - G & P
Nichols



Outside Entry 2 - G & P
Nichols

Outside Entry 2 - G & P
Nichols

Outside Entry 2 - G & P
Nichols

Outside Entry 2 - G & P
Nichols



Outside Entry 2 - G & P
Nichols



Outside Entry 2 - G & P
Nichols



Outside Entry 2 - G & P
Nichols



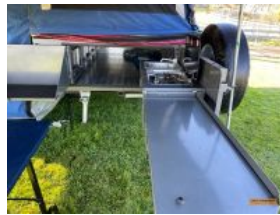
Outside Entry 2 - G & P
Nichols



Outside Entry 2 - G & P
Nichols



Outside Entry 2 - G & P
Nichols



Outside Entry 2 - G & P
Nichols



Outside Entry 2 - G & P
Nichols



Outside Entry 2 - G & P
Nichols



Outside Entry 2 - G & P
Nichols



Outside Entry 2 - G & P
Nichols



Outside Entry 2 - G & P
Nichols



Outside Entry 2 - G & P
Nichols



Outside Entry 2 - G & P
Nichols



Outside Entry 3 - Old
Springfield



Outside Entry 3 - Old
Springfield



Outside Entry 3 - Old Springfield



Outside Entry 3 - Old Springfield



Outside Entry 3 - Old Springfield



Outside Entry 3 - Old Springfield



Outside Entry 3 - Old Springfield



Outside Entry 3 - Old Springfield



Outside Entry 3 - Old Springfield



Outside Entry 3 - Old Springfield



Outside Entry 3 - Old Springfield



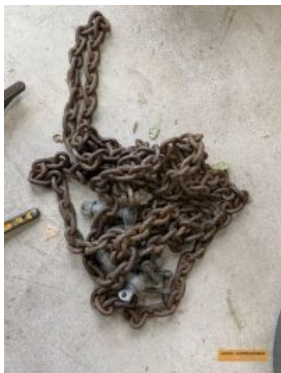
Outside Entry 3 - Old Springfield



Outside Entry 4 - L Clugston



Outside Entry 4 - L Clugston



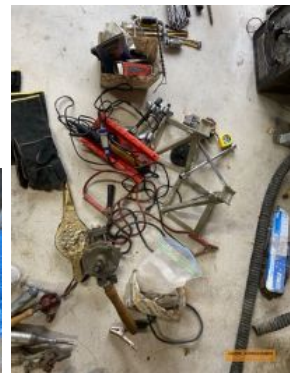
Outside Entry 4 - L Clugston



Outside Entry 4 - L Clugston



Outside Entry 4 - L Clugston



Outside Entry 4 - L Clugston



Outside Entry 4 - L
Clugston



Outside Entry 4 - L
Clugston



Outside Entry 4 - L
Clugston



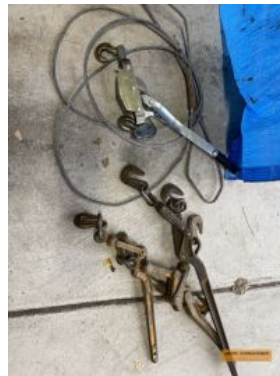
Outside Entry 4 - L
Clugston



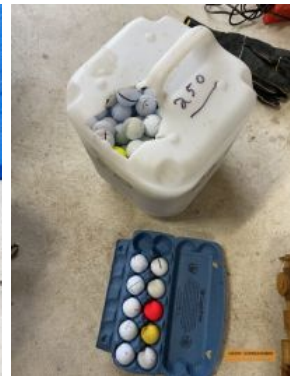
Outside Entry 4 - L
Clugston



Outside Entry 4 - L
Clugston



Outside Entry 4 - L
Clugston



Outside Entry 4 - L
Clugston



Outside Entry 4 - L
Clugston



Outside Entry 4 - L
Clugston



Outside Entry 4 - L
Clugston



Outside Entry 4 - L
Clugston



Outside Entry 4 - L
Clugston



Outside Entry 4 - L
Clugston



Outside Entry 4 - L
Clugston



Outside Entry 4 - L
Clugston



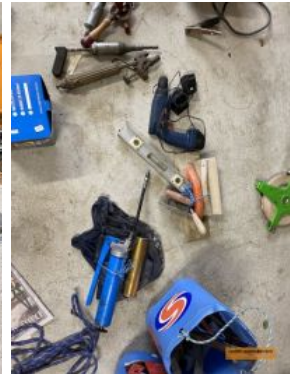
Outside Entry 4 - L
Clugston



Outside Entry 4 - L
Clugston



Outside Entry 4 - L
Clugston



Outside Entry 4 - L
Clugston



Outside Entry 4 - L
Clugston



Outside Entry 5 -
Jenda



Outside Entry 5 -
Jenda





Outside Entry 5 - Jenda



Outside Entry 5 - Jenda



Outside Entry 5 - Jenda



Outside Entry 5 - Jenda



Outside Entry 5 - Jenda



Outside Entry 5 - Jenda



Outside Entry 5 - Jenda



Outside Entry 5 - Jenda



Outside Entry 5 - Jenda



Outside Entry 5 - Jenda



Outside Entry 5 - Jenda



Outside Entry 5 - Jenda



Outside Entry 5 - Jenda



Outside Entry 5 - Jenda



Outside Entry 1 - D Breitfuss



Outside Entry 1 - D Breitfuss



Outside Entry 1 - D Breitfuss



Outside Entry 1 - D Breitfuss



Outside Entry 1 - D Breitfuss



Outside Entry 1 - D Breitfuss



Outside Entry 1 - D
Breitfuss



Outside Entry 1 - D
Breitfuss



Outside Entry 1 - D
Breitfuss



Outside Entry 1 - D
Breitfuss



Outside Entry 1 - D
Breitfuss



Outside Entry 1 - D
Breitfuss



Outside Entry 1 - D
Breitfuss



Outside Entry 1 - D
Breitfuss



Outside Entry 1 - D
Breitfuss



Outside Entry 1 - D
Breitfuss



Outside Entry 1 - D
Breitfuss



Outside Entry 1 - D
Breitfuss



Outside Entry 1 - D
Breitfuss



Outside Entry 1 - D
Breitfuss



Outside Entry 1 - D
Breitfuss



Mercedes-Benz 450 SEL - Video 1

Video Link: <https://vimeo.com/824930632?share=copy>

Mercedes-Benz 450 SEL - Video 2

Video Link: <https://vimeo.com/824932342?share=copy>

1981 Toyota FJ45 Ute (4.2L petrol);

Video Link: <https://vimeo.com/824918069?share=copy>